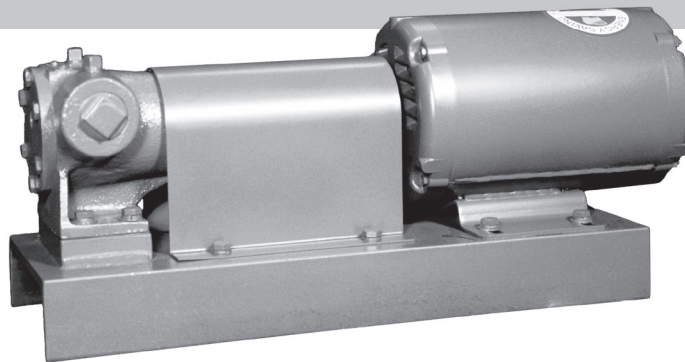


LIGHT OIL PUMP & MOTOR ASSEMBLIES

Model LO-100 & 200

- 50 or 100 PSI Discharge Pressures
- From 20 to 2100 GPH Flow Rates
- Useful as a replacement for aged assemblies

The Model LO-100 & 200 Light Oil Pump and Motor Assemblies are compact, direct drive units designed to meet the performance and reliability standards demanded in commercial, industrial and institutional applications. The pump & motor assemblies are for No. 2, No. 4, and diesel oils.



LO-200 Series shown

Typical Applications include those involving:

- Fuel Transfer
- Oil Burners
- Fuel Oil Circulating Loops
- Day Tanks
- Diesel Generators

Construction

Built for maximum life, peak performance, and quiet operation, the pump and motor are precisely aligned on a one-piece, structural steel channel base. The shafts are directly connected with a flexible coupling; rotating parts are protected by a rigid, closely fitting, steel OSHA guard. For external protection the set is prime coated and finished with an oil, water and solvent resistant, polyurethane enamel. For easy access for inspection and service, components are thru-bolted to the base and accessible from the top of the set.

The pumps are bi-rotational, positive displacement, internal gear types with cast iron housings and Buna-N self-adjusting mechanical seals. Being positive displacement pumps, the pumps require over-pressure relief valves for protection from an accidentally closed or plugged discharge line (see Preferred Model R on page 76). Pumps are suitable for both continuous and intermittent duty. Standard motors are base-mounted, have standard N.E.M.A. frames and are of open drip-proof construction (ODP).

Suggested Specifications

Oil pump and motor assemblies shall be factory assembled on a structural steel channel base and shall include a base mounted motor directly connected by a flexible coupling to a bi-rotational, internal gear pump, having self-adjusting mechanical seals and cast iron housing. Rotating parts shall have a steel OSHA guard. The sets shall be prime coated and finished with an oil, water and solvent resistant, polyurethane enamel. Pump and motor assemblies shall be Preferred Utilities Manufacturing Corp., Danbury, CT, LO-___ rated at ___ G.P.H. of (No. 2), (No. 4), (Diesel) oil against a discharge pressure of ___ P.S.I.

Approved by N.Y.C. Board of Standards and Appeals..

LO-10_ Pumps: Cal. No. 412-48-SA

LO-20_ Pumps: Cal. No. 438-21-SA

Ordering Information

Select model number from the table below.

Catalog Number	G.P.H. Oil No. 2 / No. 4	P.S.I.	Motor		W.	L.	H.
			R.P.M.	H.P.			
LO-101E	20 / 23	100	1725	1/3*	7"	15"	10"
	23 / 23	50	1725	1/3*	7"	15"	10"
LO-102E	27 / 33	100	1725	1/3*	7"	15"	10"
	32 / 33	50	1725	1/3*	7"	15"	10"
LO-103E	80 / 93	100	1725	1/3*	7"	15"	10"
	86 / 95	50	1725	1/3*	7"	15"	10"
LO-104E	145 / 155	100	1725	1/2**	7"	15"	9"
	155 / 164	50	1725	1/2**	7"	15"	9"
LO-105E	282 / 285	50	1725	3/4**	7"	17"	9"
LO-106E	277 / 285	100	1140	1**	7"	19"	9"
LO-201	340 / 415	50	1140	1/2**	7"	18"	12"
LO-202	300 / 410	100	1140	3/4**	8"	18"	12"
LO-203	780 / 890	50	1140	3/4**	10"	20"	12"
LO-204	700 / 870	100	1140	1 1/2**	10"	21"	12"
LO-205	1100/1300	50	1140	1 1/2**	10"	21"	12"
LO-206	1000/1200	100	1140	2**	10"	21"	12"
LO-207	1900/2200	50	1140	2**	10"	26"	12"
LO-208	1800/2100	100	1140	5**	12"	28"	12"

Specifications subject to change without notice.

Pump & motor assemblies ratings are nominal at pressures shown with maximum 10" Hg vacuum at pump inlet.

*115, 208 or 230V 60Hz 1 phase.

**208, 230 or 460V 60Hz 3 phase.

Ordering Information

Select Catalog Number (see above table)

For non-standard TEFC motors or Heavy Oil Pump and motor assemblies consult the factory.